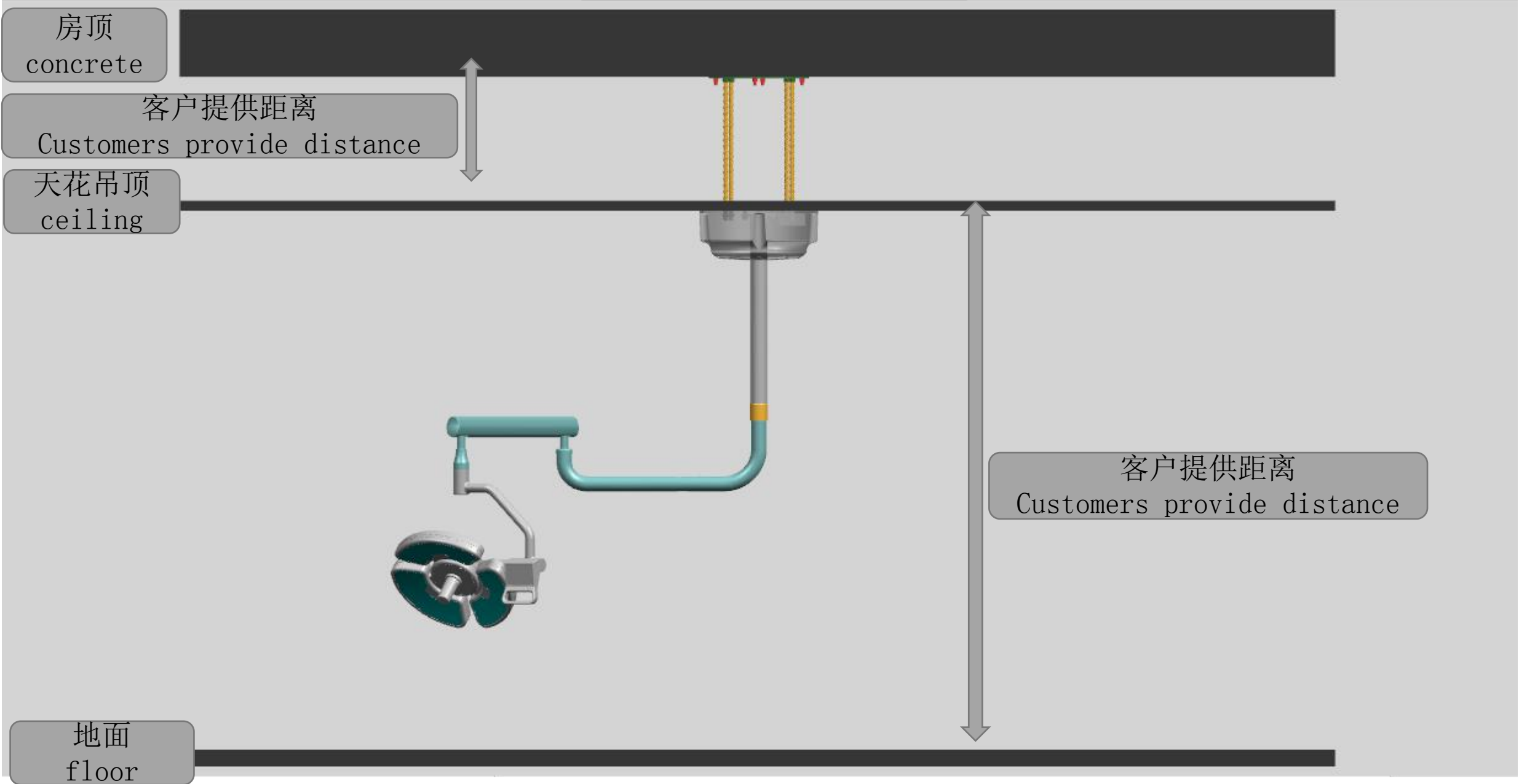


安装示意图  
Installation instruction



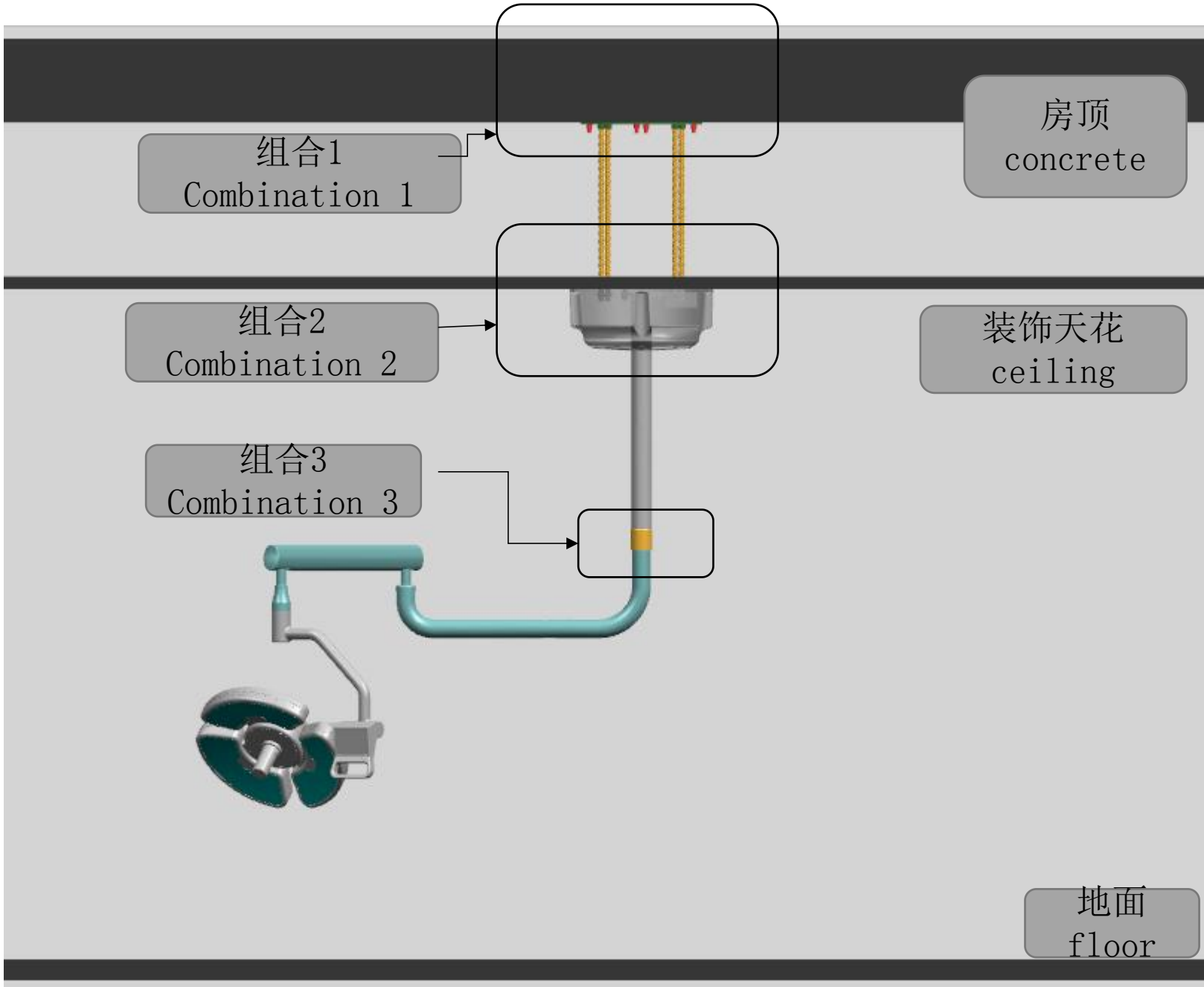
房顶  
concrete

客户提供距离  
Customers provide distance

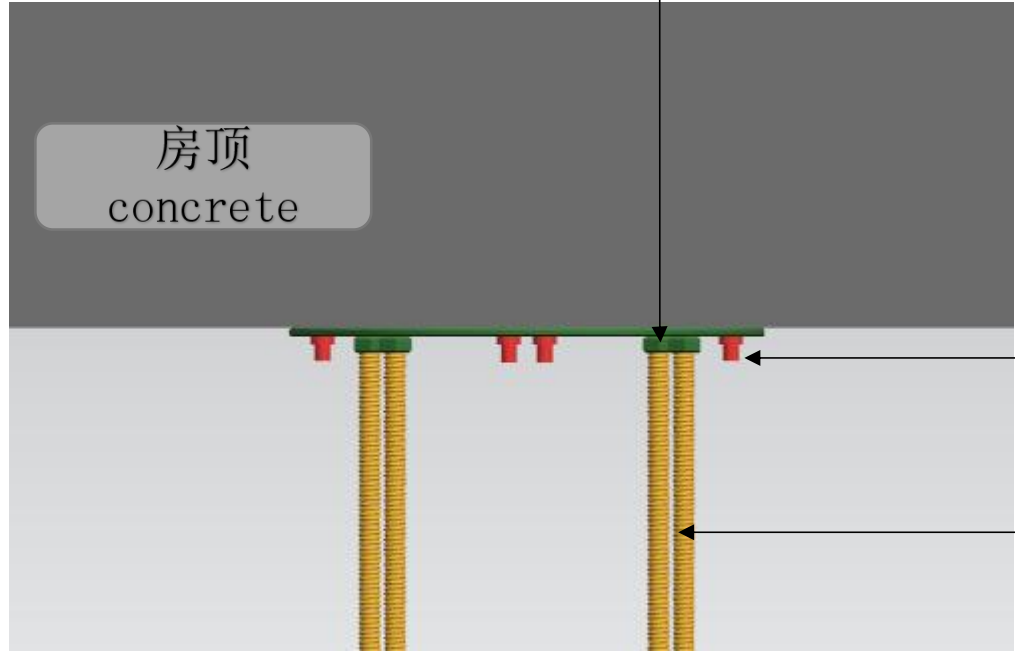
天花吊顶  
ceiling

客户提供距离  
Customers provide distance

地面  
floor



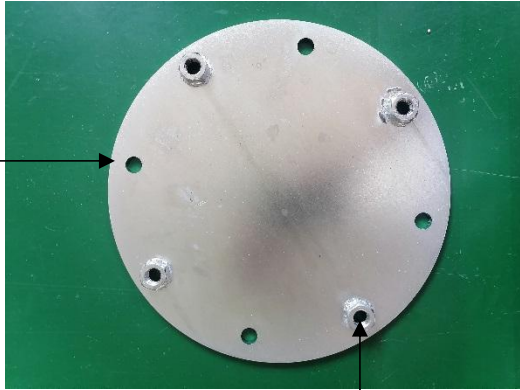
组合一  
Combination 1



1: 拉爆螺栓固定房顶  
Pulls explodes the screws into the concrete



M10膨胀螺丝  
M10 expansion screws



190mm底板  
190mm bottom board

2: 丝杆安装  
Install steeve



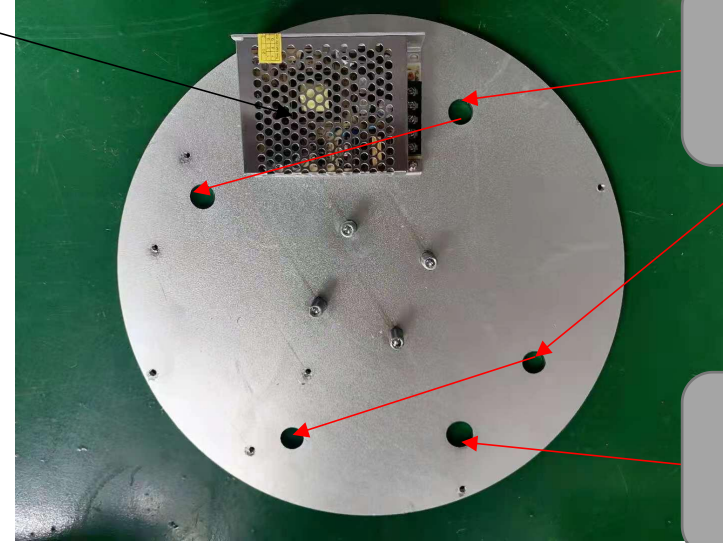
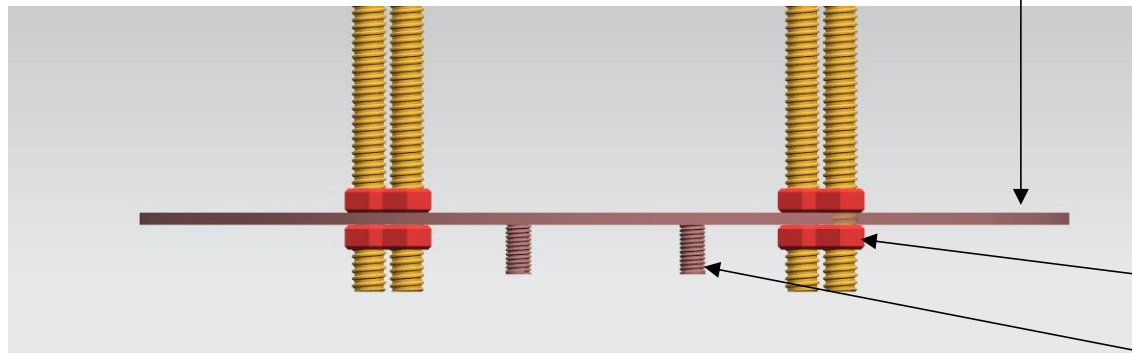
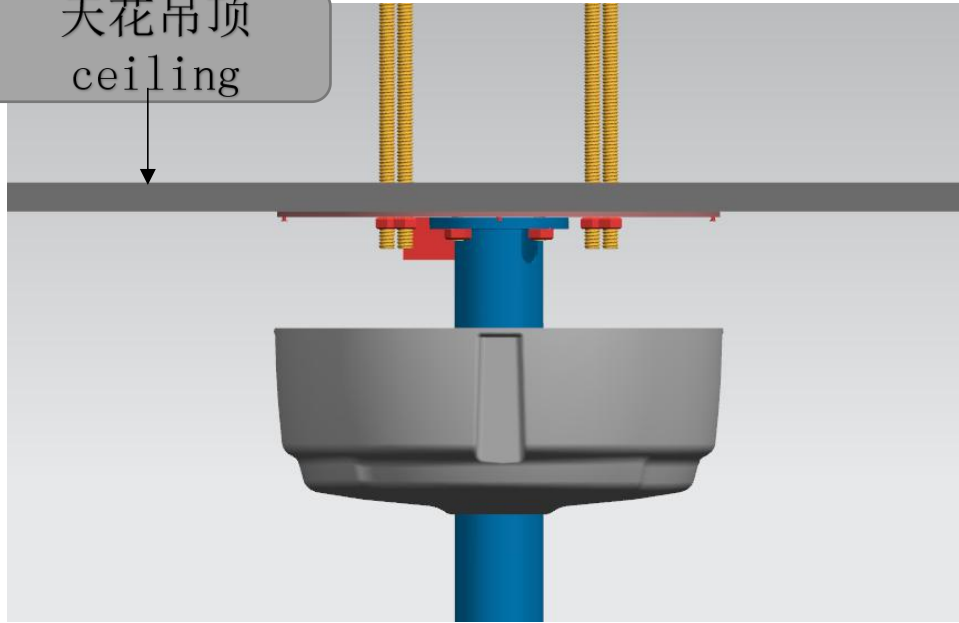
M14丝杆  
M14 steeve

组合二  
Combination 2

DentalDeal

电源  
Electric power

天花吊顶  
ceiling



丝杆过孔  
Put steeve into  
holes

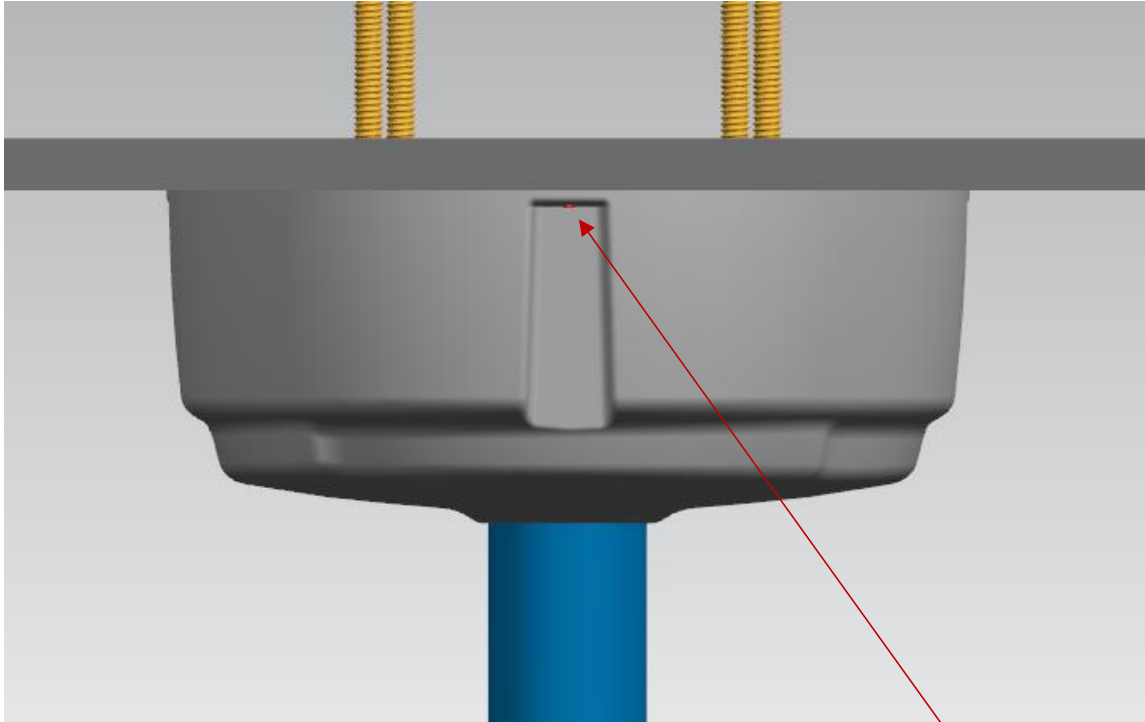
穿线孔  
Put wires into  
hole

1: 根据丝杆过孔, 穿线孔在天花吊顶相对应位置开孔  
Make holes on the ceiling according to relevant positions

2: 螺杆上四个螺母后固定大圆盘, 大圆盘螺纹向下, 上下固定螺母。  
Use the strews of steeve to fix the disk, put the disk down, and then fix the screws

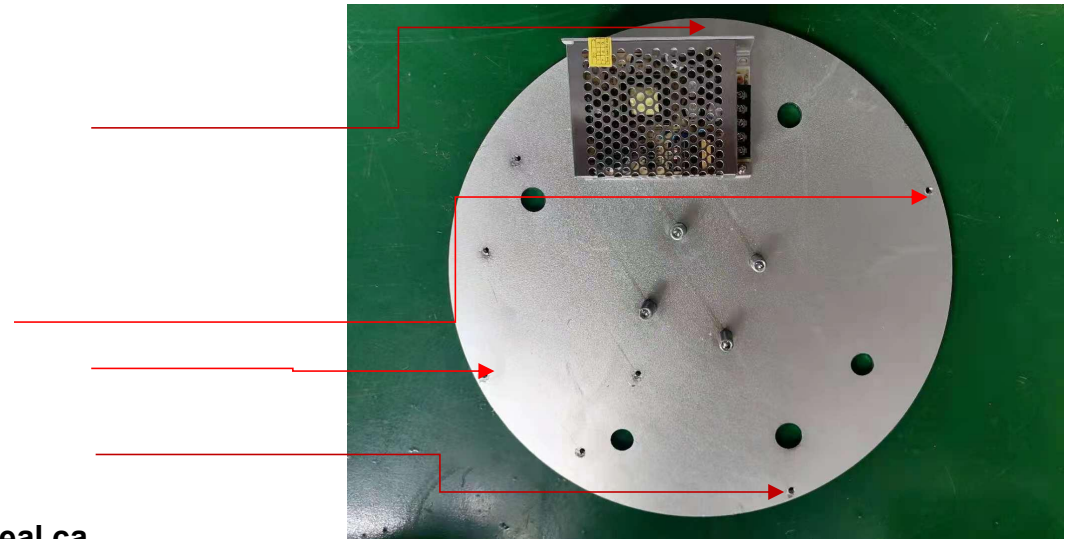
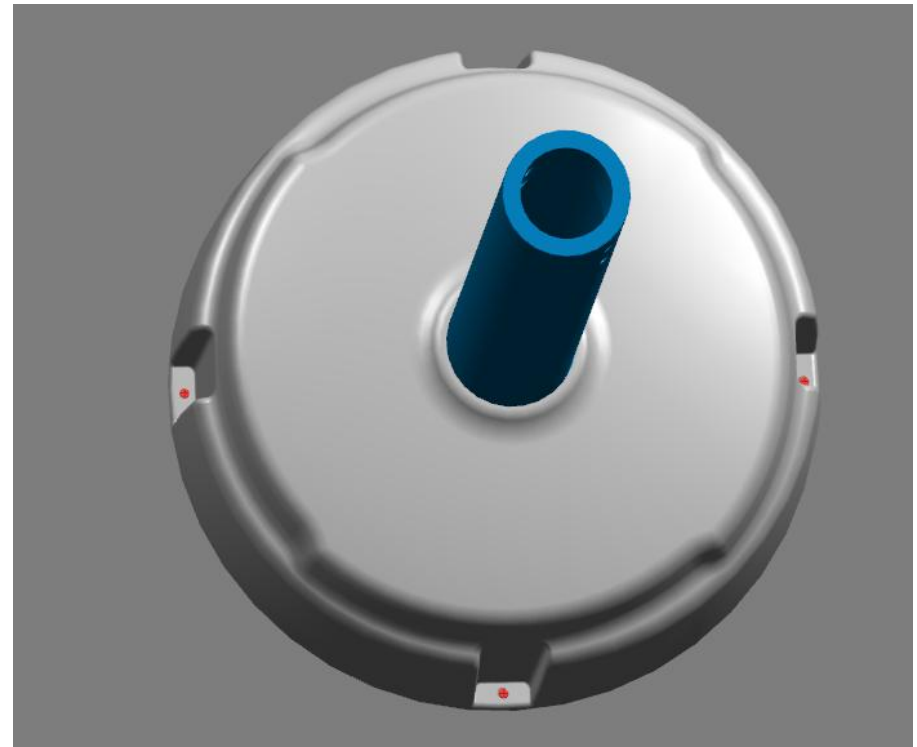
4: 螺丝固定灯罩

Use the screws to fix the disk

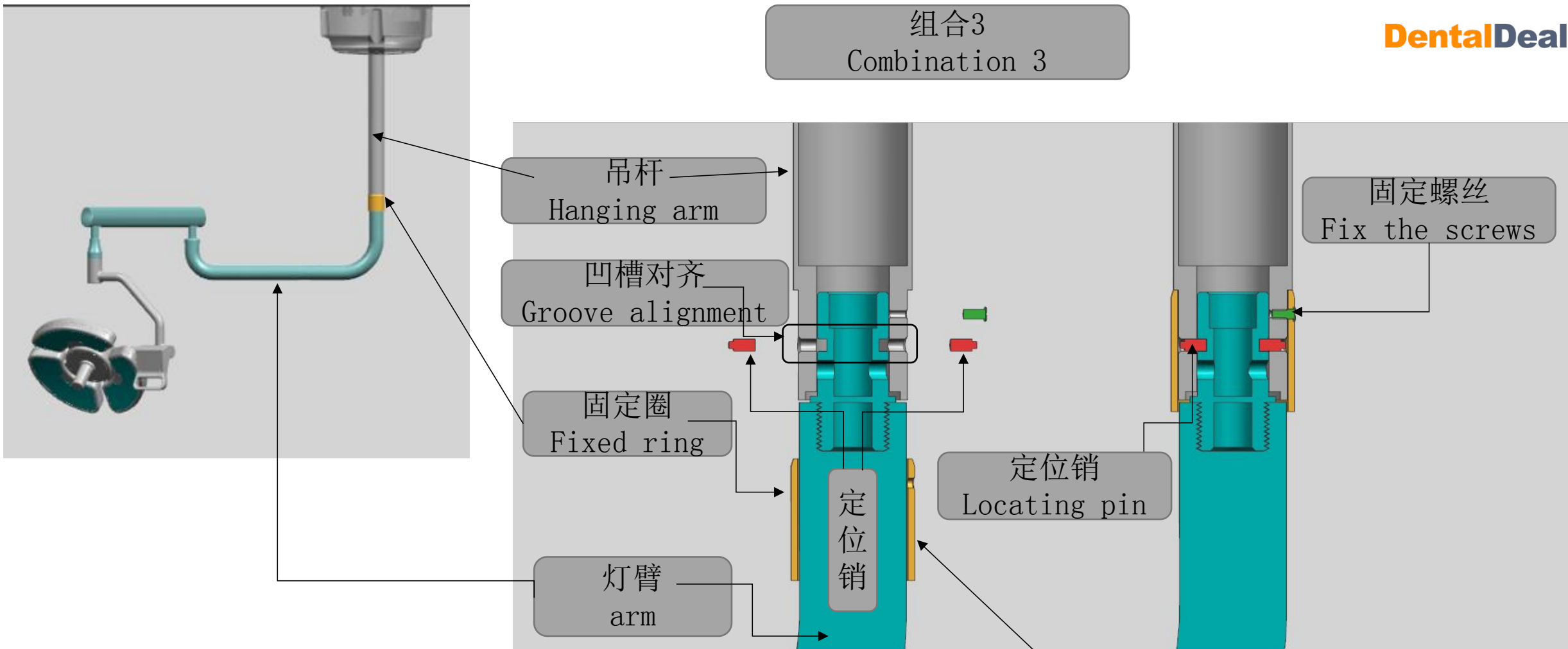


螺丝固定位置4颗

The fixed position for 4 screws

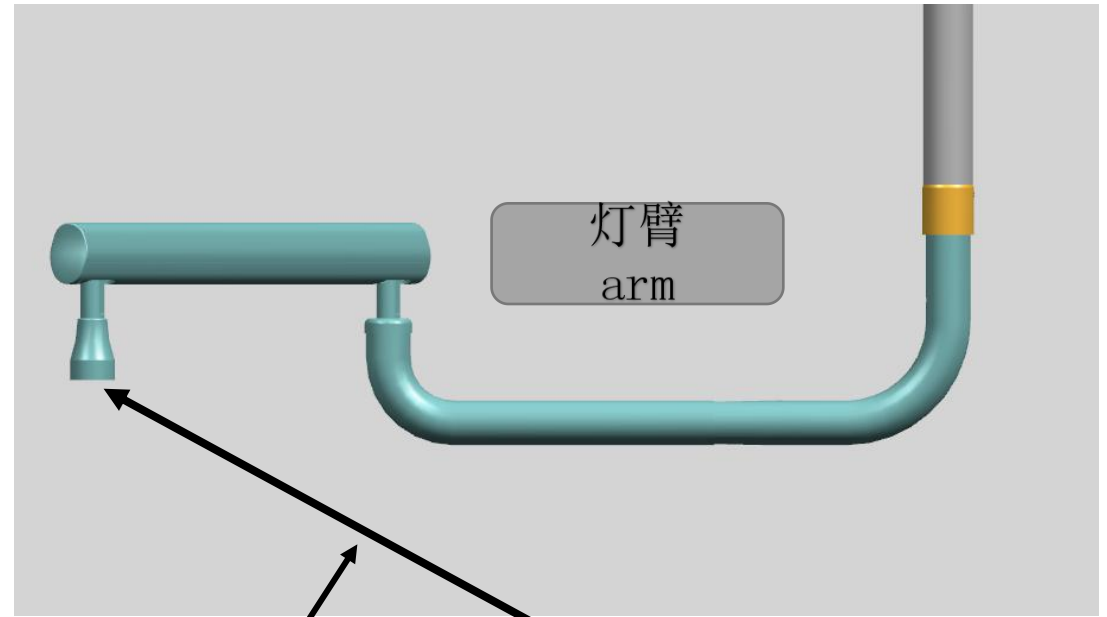
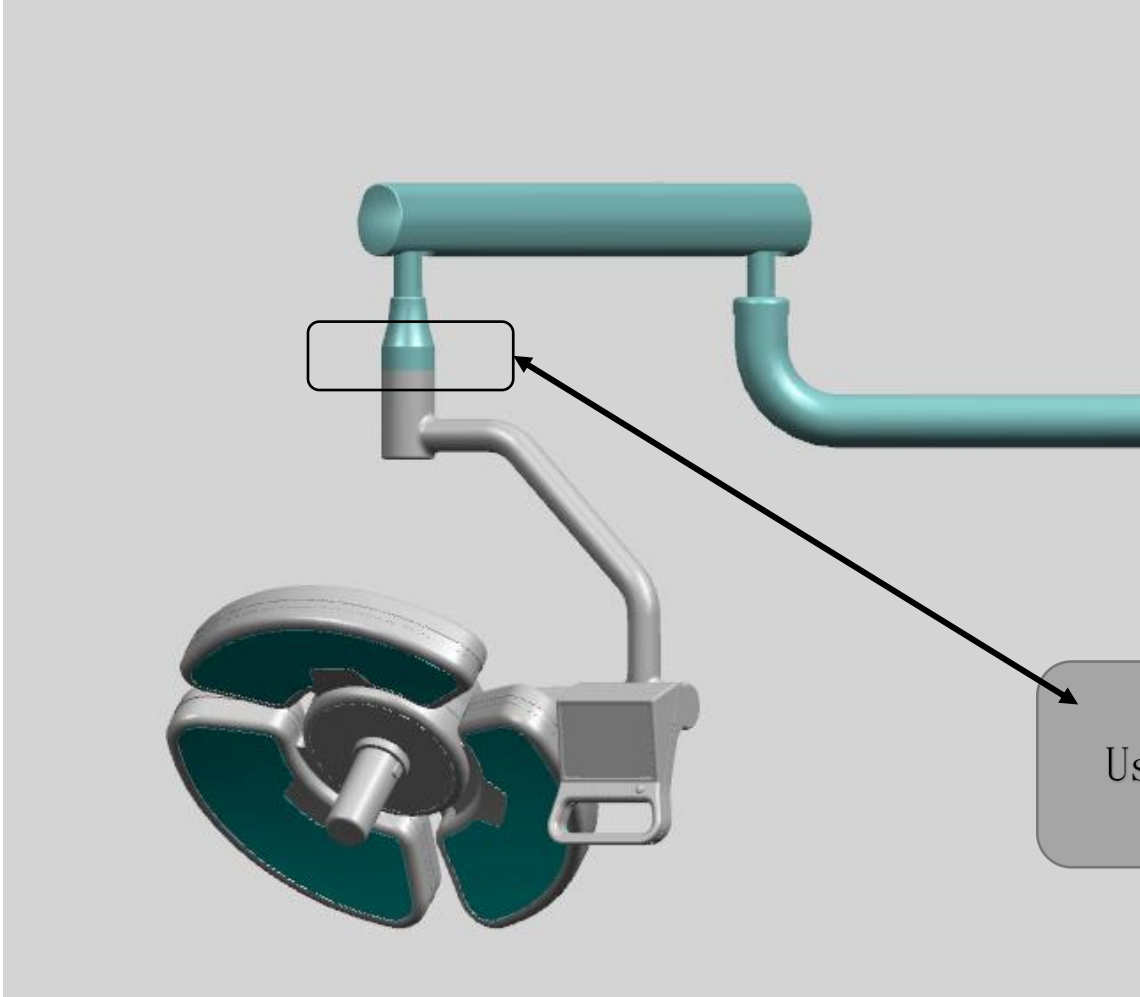


组合3  
Combination 3

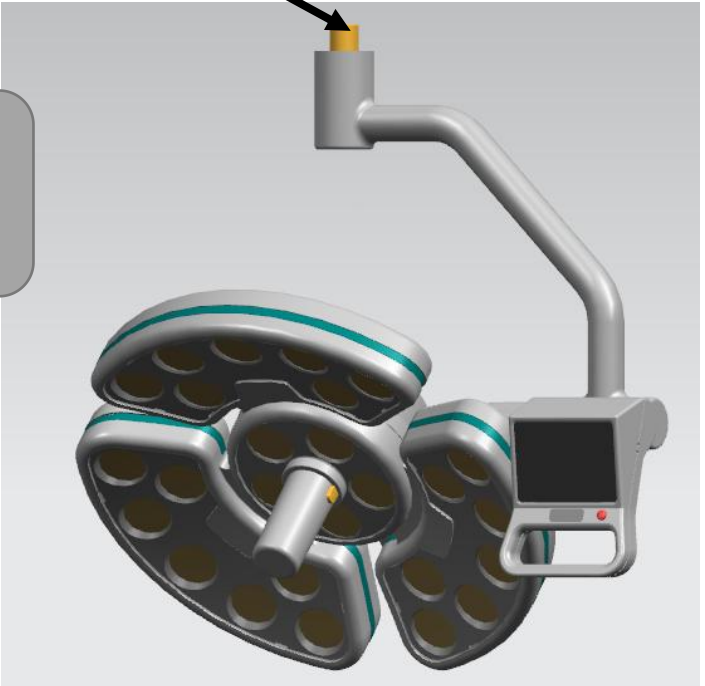


吊杆。灯臂连接之前将**固定圈**套入灯臂，对齐黑色框标识凹槽，放入定位销，注意小头向外，上移固定圈，用螺丝固定。

Put the fixed ring into the arm before connecting hanging arm and the arm, put the locating pin into grooves, small side outward, move up the fixed ring, and the then fix the screws



螺丝连接固定  
Use the screws to  
fix



灯组  
Led lamp